



CARCINOID NET CANCER

NeuroEndocrine Tumors (NETs) is the umbrella term for a group of unusual, often slow-growing cancers, which develop from cells in the diffuse endocrine system. They are found most commonly in the lung or gastrointestinal system, but they can also originate in other parts of the body such as the pancreas, ovary, and testes.

NETs are the fastest growing class of cancers worldwide.

- There are an estimated 12,000-15,000 Canadians affected by Carcinoid NET Cancer but only about 10% have had a diagnosis.
- Carcinoid NET Cancer is misdiagnosed much of the time as something else.
- By the time a patient is correctly diagnosed the cancer has often spread to other parts of the body. There are indicators that can help correctly diagnose Carcinoid NET Cancer.

We can improve detection of Carcinoid NET Cancer through enhanced education of general practitioners and specialists.

WHY IS THE ZEBRA OUR MASCOT?

In medical school, doctors are taught "when hearing hoofbeats, think horses, not zebras." Carcinoid Neuroendocrine Cancers have been thought of as 'rare' and therefore may be considered as zebras.



The objectives of CNETS Canada are:

- To support NeuroEndocrine Cancer research by gifting funds to other registered charities or organizations that are otherwise qualified donees as defined in subsection 149.1(1) of the Income Tax Act
- To provide workshops, seminars, and conferences for patients, medical professionals, and policymakers, which reflect best practices in diagnosis, treatment and management of Carcinoid NET Cancers, and illustrate the need for Networks of Expertise:
- To create awareness of Carcinoid NET Cancer on the part of patients, caregivers, medical professionals, policy makers, and the general public.
- To establish face to face Carcinoid NET Cancer support groups in order to provide ongoing information and support for the Carcinoid NeuroEndocrine Cancer patient and caregiver community.

Find out more by visiting our web site
cnetscanada.org.

CONTACT US

Maureen Coleman
President, CNETS Canada
Fax: 416-484-4306
Email: info@cnetscanada.org

Jim Kormos
Vice President, CNETS Canada
Phone: 416-485-9659
Fax: 416-484-4306
Email: jimkormos@rogers.com

Mailing Address:
Carcinoid NeuroEndocrine Tumour Society Canada
4103-3219 Yonge Street
Toronto, Ontario
M4N 3S1
Canada

cnetscanada.org

OUR MISSION STATEMENT

Building towards a cure for NeuroEndocrine Tumours and Cancers through Research, Education, Awareness and Support

OUR VISION STATEMENT

To raise the awareness of NETs among patients, the general public, the medical and the research community by: (a) providing well-informed support on management and treatment options to all those involved with NETs; and (b) supporting NET-directed research and better clinical management practices that will achieve an ultimate goal of early accurate diagnosis and best possible treatment for NET patients.

ABOUT US

CNETS Canada is a Canadian charity designed to serve patients and medical professionals by providing high quality resources to both groups. Research, education, awareness, and support are CNETS' priorities. CNETS Canada was Incorporated in March 2007 and was granted charitable status in February 2008 .

CARCINOID NEUROENDOCRINE CANCERS

- Carcinoid-NeuroEndocrine Tumours (CNETs) often grow slowly over months and years but can occasionally grow quickly.
- They can be silent for years. They often metastasize to the liver and sometimes to the bone before showing any symptoms.
- From initial onset of symptoms, the average time to proper diagnosis exceeds five years.
- They are often misdiagnosed because their symptoms often mimic more common conditions, like Irritable Bowel Syndrome or Crohn's disease.
- Diagnosis of this type of cancer is complex and often requires sophisticated laboratories and scanning techniques.
- Important tests are the 5HIAA 24 hour urine test, and the Chromogranin A test which measure production of hormones specific to Carcinoid NET Cancers.
- NETS almost always become malignant (cancerous). Surgical removal of very small, localized tumors is the only curative therapy.
- With timely treatment, these symptoms can be controlled and heart damage prevented.
- Therein lies the true problem; patients are too often diagnosed when the damage has already been done.

DIAGNOSING NEUROENDOCRINE TUMOURS

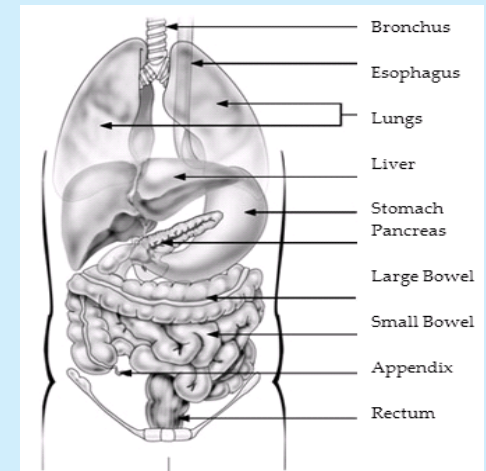
NeuroEndocrine tumours can be difficult to diagnose. It is common for patients to make many visits to the doctor over several years before an actual diagnosis is made. Symptoms are often very vague and similar to more common health problems. They can come and go. Common symptoms may include:

- Diarrhea
- Abdominal cramps
- Flushing of the skin
- Wheezing or shortness of breath
- Pounding of the heart
- Skin rash
- Low or high blood sugar
- Stomach ulcers that return when ulcer medication is stopped
- Low or high blood pressure
- Headache

Symptoms will depend on the type of tumour. A sample of tissue or biopsy from the primary tumour or the liver tumour is the best way to make the diagnosis. Tumours are often found by accident when surgery is done for some other reason.

SITES, CAUSES AND TREATMENT OPTIONS

Sites where NeuroEndocrine tumors can appear



What causes NeuroEndocrine cancer?

Most NeuroEndocrine tumours have no known cause. NeuroEndocrine tumours are usually, but not always, slow growing. They may be present in a person's body for many years before they cause problems.

Treatment Options

The treatment of a NET cancer depends on the size and location of the tumor, whether the cancer has spread, and the patient's overall health. These are a complex group of cancers to manage, and, ideally, a multidisciplinary team of specialists will work with the patient to determine the best treatment plan.